

The European Medical ALARA network – a European initiative to improve engagement of stakeholders in the medical sector

In order to strengthen radiological protection in the medical field a variety of stakeholders have to be addressed and approached differently, pinpointing the specific roles of the experts, training, organizational and cultural aspects. One European initiative is to create a network in the medical sector.; The European Medical ALARA Network, EMAN. The network should serve as a meeting point for different stakeholder with the goal to strengthen radiological protection.

Networking

Different stakeholders have different roles and points of view. There is a need for a common basis and for discussions. In a network competence of different persons is merged. Networking depends on persons taking responsibility and become instigators of the work.

- **Networking is a tool for gathering different experiences, knowledge and views**
- **Networking creates an environment for individuals to discuss and exchange ideas**
- **Networking is a way to communicate**

Stakeholders in the medical sector

Different stakeholders have different roles and points of view. There is a need for a common basis and for open discussions. The competence of different persons has to be merged. It is natural that some of the stakeholders will take the lead and become the core group and drivers of the work and the network.

Stakeholders:

Hospital engineers, Hospital management, Manufacturers, Media, Medical physicists, Radiologists, Patients, Politicians, Radiographers, Research organizations, Referrers, Regulators, Standardization organizations etc

Important areas

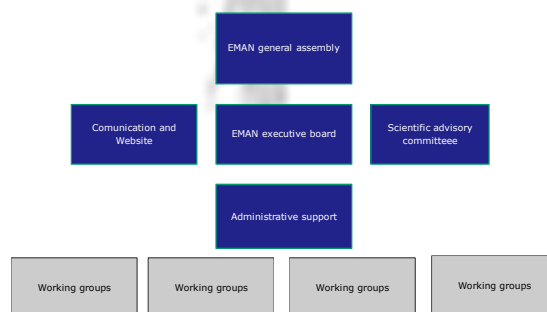
There is a need to work with all areas in the medical field involving ionizing radiation. The work has been so far concentrating on radiology in three working groups.

Working groups:

- Optimisation of patient and occupational exposures in **CT procedures**
- Optimization of patient and occupational exposure in **interventional radiology**
- Radiological safety for patients and personnel in activities **using X-ray equipment outside the X-ray departments**

One important part of the work is to find proper communication and information channels for the result and findings of the work.

Network structure



Information about the project and future network

Contact information please visit our website:

URL <http://www.eman-network.eu/>

EMAN Consortium

Anders Frank, Wolfram Leitz, Anja Almén **SSM**, Sweden; Caroline Schieber, **CEPN**, France; Annemarie Schmitt-Hannig, Jürgen Griebel, **BfS**, Germany; Stelios Christofides, Renato Padovani, **EFOMP**; Graciano Paulo, Sija Geers-van Gemeren, **EFRS**; Filip Vanhavere, **EURADOS**; Hubert Ducou le Pointe, Peter Vock, **ESR**

EMAN is supported by the European Commission, Project-No. TREN/09/NUCL/SI2.542127