

# This is WANO

---

World Association of Nuclear Operators





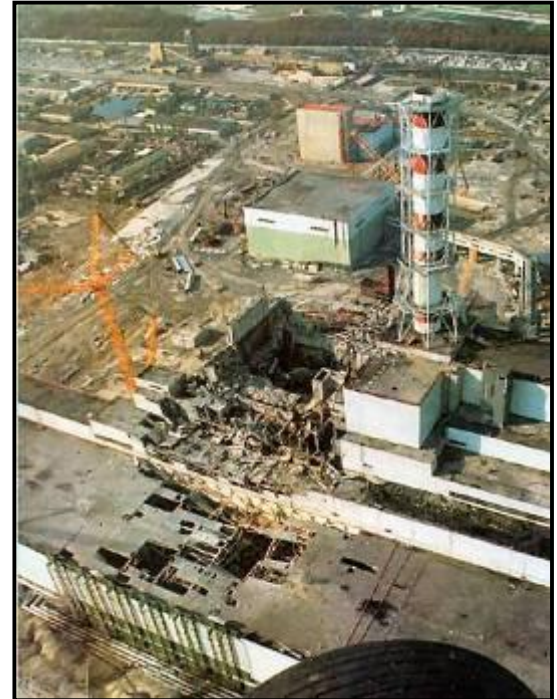
To maximise the safety and reliability of nuclear power plants worldwide by working together to assess, benchmark and improve performance through mutual support, exchange of information, and emulation of best practices.



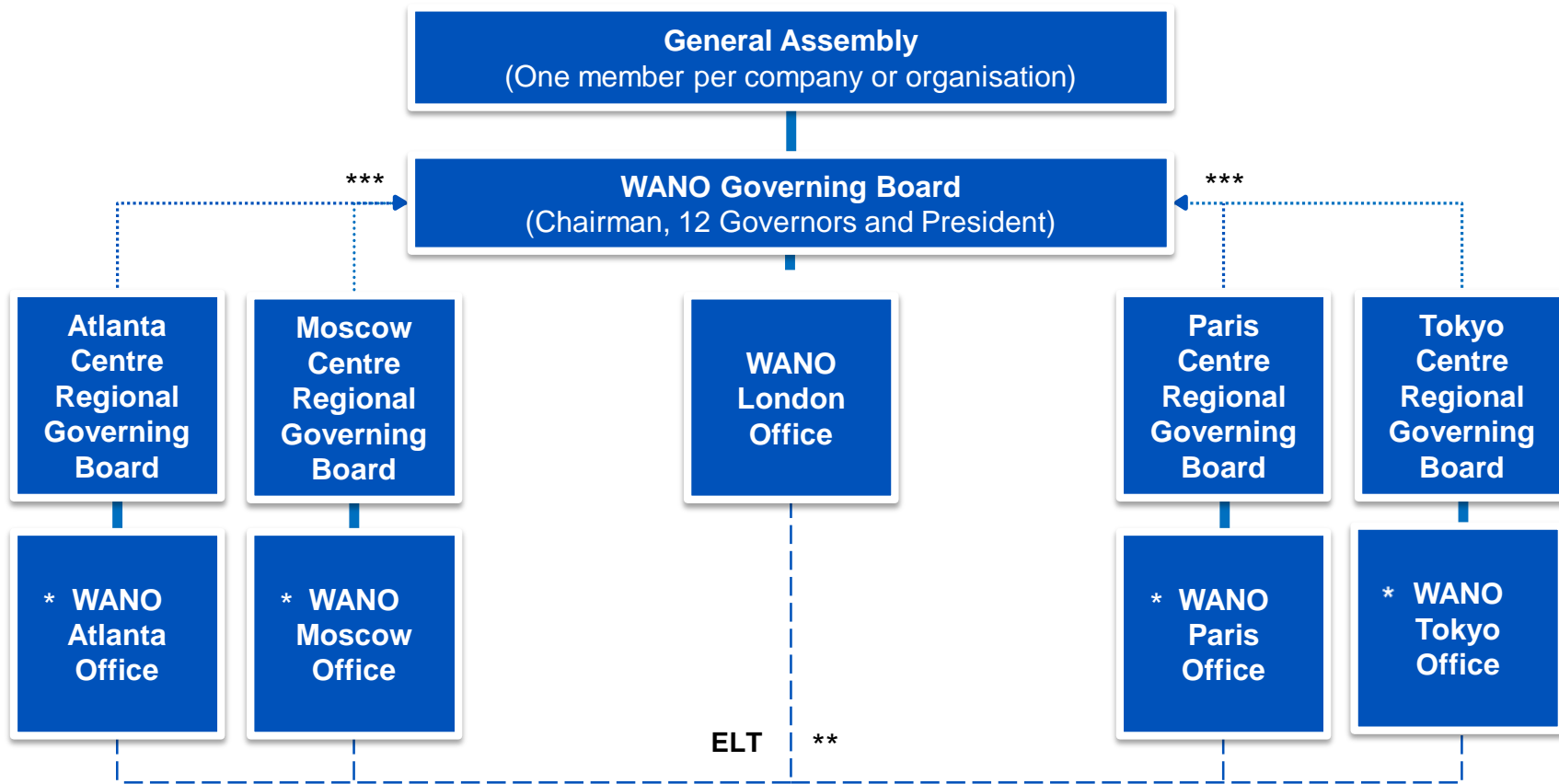
**WANO** mission

# WANO Overview

- In 1986, the accident at Chernobyl occurred; in May 1989 WANO was formed
- The world's nuclear operators realised that an event at one plant would impact every plant
- The accident reinforced the need for international cooperation and knowledge-sharing, to ensure that safety is at the heart of the nuclear industry
- Today every operator of a commercial nuclear plant is a member of WANO; 118 members



# WANO Organisation



\* Regional Centres are responsible to their respective Regional Governing Boards for the delivery of high-quality activities within their regions.

\*\*\* Each Regional Governing Board is represented in the WANO Governing Board

\*\* Regional Centres are responsible to the London office for implementing policies and programmes set forth by WANO's Main Governing Board.



# WANO Programmes

Four programmes define WANO member support

1. Operating Experience
2. Peer Reviews
3. Professional and Technical Development
4. Technical Support and Exchange

